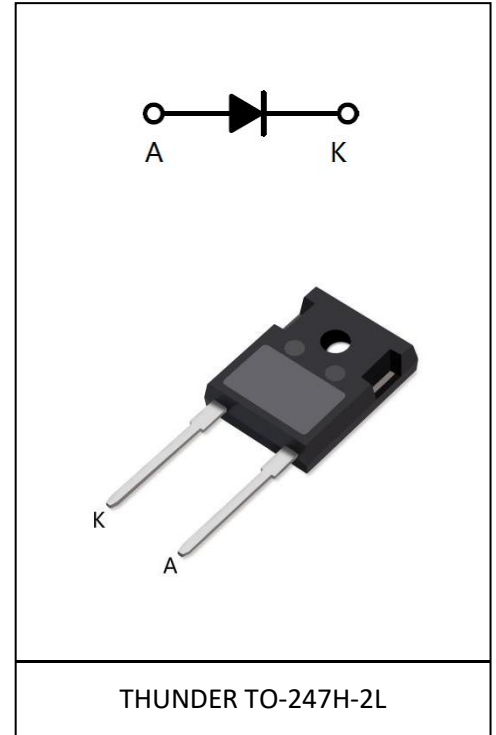


Standard Rectifier

Features:

- Planar passivated chips
- Very low leakage current
- Very low forward voltage drop
- Improved thermal behaviour
- High commutation robustness
- High surge capability



Description/Applications

- Diode for main rectification
- For single and three phase bridge configurations
- Bypass diode

Product Summary

V_{RRM}	2000V
$I_{F(AV)}$	75A
$V_{F(@100A)}$	1.25A

Table1: Absolute Maximum Ratings

Parameter	Symbol	Test Conditions	Values	Units
Max non-Repetitive peak reverse voltage	V_{RSM}		2000	V
Max Repetitive peak reverse voltage	V_{RRM}		2000	V
Average forward current	$I_{F(AV)}$	$T_c = 150^\circ\text{C}$	100	A
Peak forward surge current (10ms single half sine-wave)	I_{FSM}	$T_c = 25^\circ\text{C}$	1000	
Operating junction temperature	T_j		175	$^\circ\text{C}$
Storage temperatures	T_{stg}		-55 to +175	$^\circ\text{C}$
Total power dissipation	P_{tot}		250	W

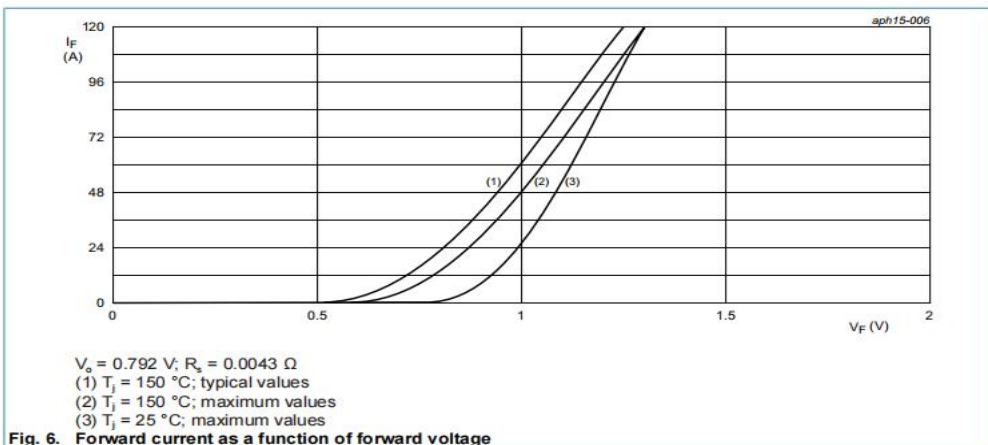
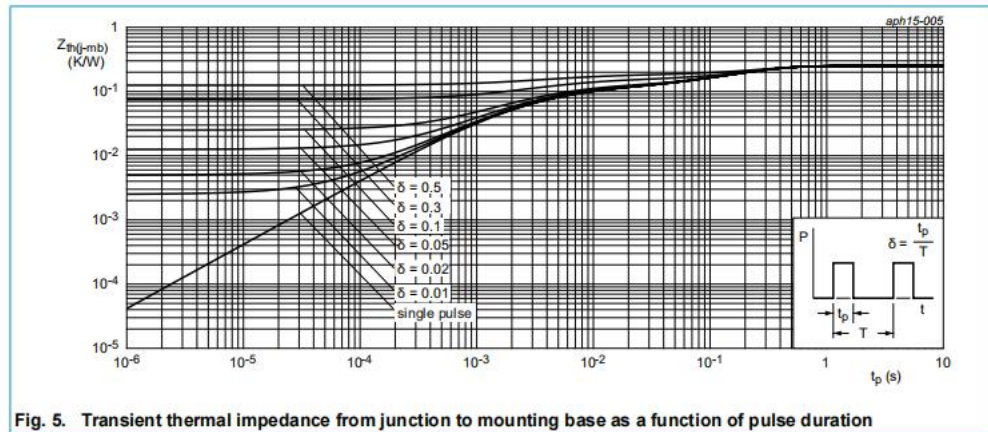
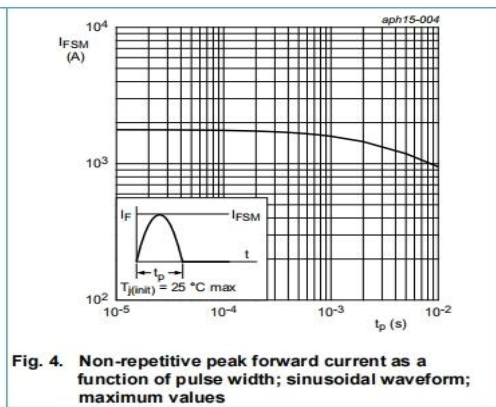
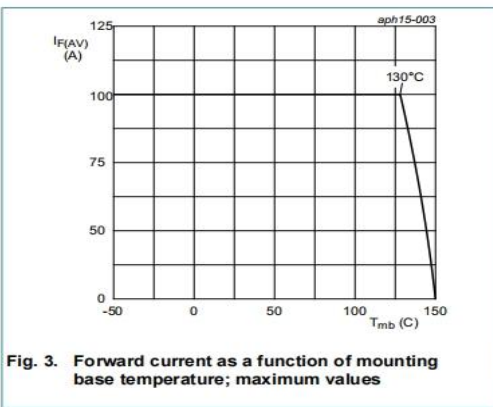
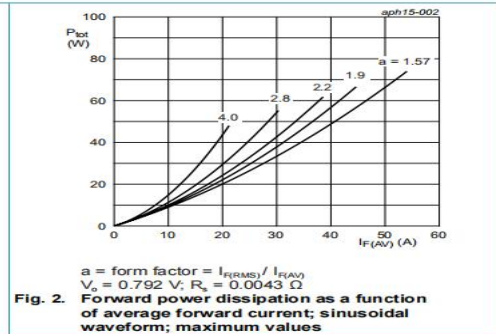
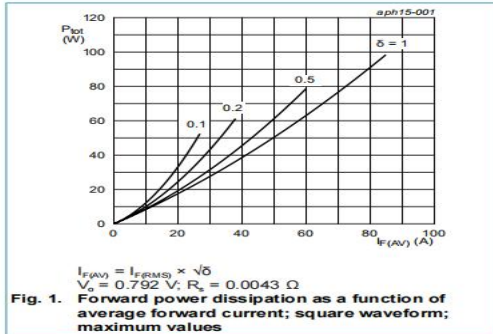
Table2: Electrical characteristics (Tc=25°C unless otherwise specified)

Parameter	Symbol	Test Conditions	Min.	Typ.	Max.	Units
Breakdown voltage Blocking voltage	V_{BR}, V_R	$I_R=100\mu A$	2000			V
Forward voltage	V_F	$I_F=75A (25^\circ C)$			1.25	
		$I_F=100A (25^\circ C)$			1.35	
Reverse current	I_R	$V_R=1800V$			2	μA
		$T_j=150^\circ C, V_R=1800V$			1500	

Table3: Thermal characteristics

Parameter	Symbol	Typ.	Max.	Units
Junction-to-Case	$R_{\theta JC}$	0.25	0.5	$^\circ C/W$

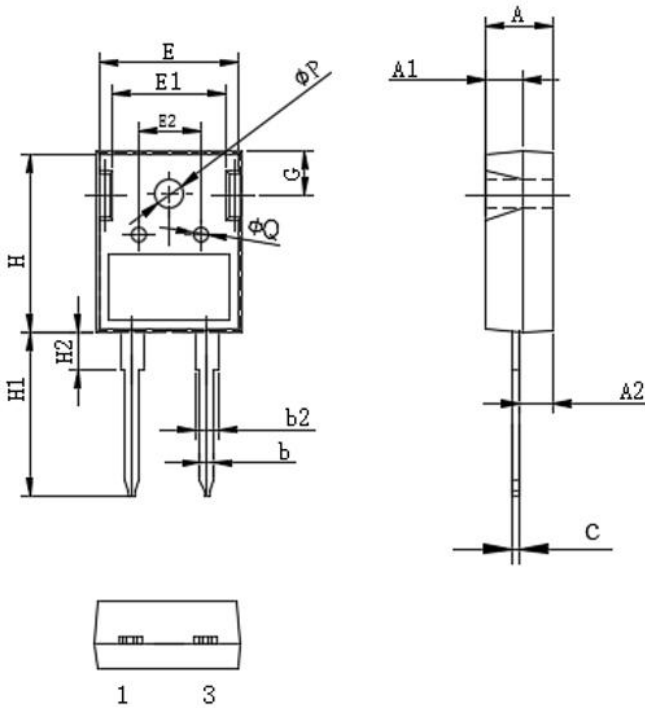
Table4: Electrical performance (typical)



Package Information

TO-247H-2L PACKAGE

基本尺寸



Symbol	单位 mm		
	Min	Nom	Max
A	4.80	5.00	5.20
A1	2.80	3.00	3.20
A2	2.20	2.40	2.60
b	1.05	1.20	1.35
b2	1.80	2.00	2.20
c	0.50	0.60	0.70
E	15.6	15.80	16.0
E1	12.3	12.50	12.7
E2	6.00	6.20	6.40
H	20.5	21.0	21.5
H1	19.0	20.0	21.0
H2	3.00	4.00	5.00
G	5.70	5.90	6.10
ΦP	3.30	3.50	3.50
ΦQ	2.30	2.50	2.70

Notice

Thunder Microelectronics Incorporated Limited reserves the right to make changes without further notice to any products or specifications herein. When use the product, be sure to obtain the latest specification.

Thunder Microelectronics Incorporated Limited does not assume any liability arising out of the application or any product described herein. When using Thunder Microelectronics Incorporated Limited products in your equipment, you are requested to take adequate safety measures to prevent the equipment from causing a physical injury ,fire or other problem if any of the products become faulty.

-Headquarters

WuXi Thunder Microelectronics Incorporated Limited
 Building E1-9, No.200 LingHu Road, XinWu district,WuXi,China 214135
 Tel:+86-510-85160109 Fax:+86-510-85160109